



Wine Coolers

Models WC-CN-0126-DB, 0126-D

Items 48525, 48526

Instruction Manual



Revised - 11/13/2024



Toll Free: 1-800-465-0234
Fax: 905-607-0234
Email: service@omcan.com
www.omcan.com



Table of Contents

Model WC-CN-0126-DB / Model WC-CN-0126-D

Section	Page
Disclaimer -----	3
General Information -----	4 - 5
Safety and Warranty -----	5 - 8
Technical Specifications -----	9
Installation -----	9 - 10
Operation -----	10 - 12
Maintenance -----	12
Troubleshooting -----	12 - 14
Parts Breakdown -----	15 - 17
Electrical Schematics -----	18
Warranty Registration -----	19

OMCAN IS NOT RESPONSIBLE FOR ANY DAMAGES DUE TO WATER LEAKS. WARRANTY FOR WATER LEAKS IS VOID IF THE AMBIENT ROOM TEMPERATURE EXCEEDS 75°F AND 55% RELATIVE HUMIDITY, AND THE APPLIANCE DRAIN IS NOT CONNECTED DIRECTLY TO A FLOOR DRAIN.

OMCAN N'EST PAS RESPONSABLE DES DOMMAGES DUS AUX FUITES D'EAU. LA GARANTIE POUR LES FUITES D'EAU EST ANNULÉE SI LA TEMPÉRATURE AMBIANTE DE LA PIÈCE DÉPASSE 75°F ET 55% D'HUMIDITÉ RELATIVE, ET SI LE DRAIN DE L'APPAREIL N'EST PAS RACCORDÉ DIRECTEMENT À UN DRAIN DE PLANCHER.

OMCAN NO SE HACE RESPONSABLE DE LOS DAÑOS CAUSADOS POR FUGAS DE AGUA. LA GARANTÍA POR FUGAS DE AGUA QUEDA ANULADA SI LA TEMPERATURA AMBIENTE SUPERA LOS 75°F Y EL 55% DE HUMEDAD RELATIVA, Y EL DESAGÜE DEL APARATO NO ESTÁ CONECTADO DIRECTAMENTE A UN DESAGÜE DE PISO.

General Information

Omcan Manufacturing and Distributing Company Inc., Food Machinery of America, Inc. dba Omcan and Omcan Inc. are not responsible for any harm or injury caused due to any person's improper or negligent use of this equipment. The product shall only be operated by someone over the age of 18, of sound mind, and not under the influence of any drugs or alcohol, who has been trained in the correct operation of this machine, and is wearing authorized, proper safety clothing. Any modification to the machine voids any warranty, and may cause harm to individuals using the machine or in the vicinity of the machine while in operation.

CHECK PACKAGE UPON ARRIVAL

Upon receipt of an Omcan shipment please inspect for external damage. If no damage is evident on the external packaging, open carton to ensure all ordered items are within the box, and there is no concealed damage to the machine. If the package has suffered rough handling, bumps or damage (visible or concealed), please note it on the bill of lading before accepting the delivery and contact Omcan within 24 hours, so we may initiate a claim with the carrier. A detailed report on the extent of the damage caused to the machine must be filled out within three days, from the delivery date shown in the shipping documents. Omcan has no recourse for damaged products that were shipped collect or third party.

Before operating any equipment, always read and familiarize yourself with all operation and safety instructions.

Omcan would like to thank you for purchasing this machine. It's of the utmost importance to save these instructions for future reference. Also save the original box and packaging for shipping the equipment if servicing or returning of the machine is required.

Omcan Fabrication et distribution Compagnie Limitée et Food Machinery d'Amérique, dba Omcan et Omcan Inc. ne sont pas responsables de tout dommage ou blessure causé du fait que toute personne ait utilisé cet équipement de façon irrégulière. Le produit ne doit être exploité que par quelqu'un de plus de 18 ans, sain d'esprit, et pas sous l'influence d'une drogue ou d'alcool, qui a été formé pour utiliser cette machine correctement, et est vêtu de vêtements de sécurité appropriés. Toute modification de la machine annule toute garantie, et peut causer un préjudice à des personnes utilisant la machine ou des personnes à proximité de la machine pendant son fonctionnement.

VÉRIFIEZ LE COLIS DÈS RÉCEPTION

Dès réception d'une expédition d'Omcan veuillez inspecter pour dommages externes. Si aucun dommage n'est visible sur l'emballage externe, ouvrez le carton afin de s'assurer que tous les éléments commandés sont dans la boîte, et il n'y a aucun dommage dissimulé à la machine. Si le colis n'a subi aucune mauvaises manipulations, de bosses ou de dommages (visible ou cachée), notez-le sur le bond de livraison avant d'accepter la livraison et contactez Omcan dans les 24 heures qui suivent, pour que nous puissions engager une réclamation auprès du transporteur. Un rapport détaillé sur l'étendue des dommages causés à la machine doit être rempli dans un délai de trois jours, à compter de la date de livraison indiquée dans les documents d'expédition. Omcan n'a aucun droit de recours pour les produits endommagés qui ont été expédiés ou cueillis par un tiers transporteur.

Avant d'utiliser n'importe quel équipement, toujours lire et vous familiariser avec toutes les opérations et les



General Information

consignes de sécurité.

Omcan voudrais vous remercier d'avoir choisi cette machine. Il est primordial de conserver ces instructions pour une référence ultérieure. Également conservez la boîte originale et l'emballage pour l'expédition de l'équipement si l'entretien ou le retour de la machine est nécessaire.

Omcan Empresa De Fabricacion Y Distribucion Inc. Y Maquinaria De Alimentos De America, Inc. dba Omcan y Omcan Inc. no son responsables de ningun daño o perjuicio causado por cualquier persona inadecuada o el uso descuidado de este equipo. El producto solo podra ser operado por una persona mayor de 18 años, en su sano juicio y no bajo alguna influencia de droga o alcohol, y que este ha sido entrenado en el correcto funcionamiento de esta máquina, y ésta usando ropa apropiada y autorizada. Cualquier modificación a la máquina anula la garantía y puede causar daños a las personas usando la máquina mientras esta en el funcionamiento.

REVISE EL PAQUETE A SU LLEGADA

Tras la recepcion de un envio Omcan favor inspeccionar daños externos. Si no hay daños evidentes en el empaque exterior, Habra el carton para asegurarse que todos los articulos solicitados estén dentro de la caja y no encuentre daños ocultos en la máquina. Si el paquete ha sufrido un manejo de poco cuidado, golpes o daños (visible o oculto) por favor anote en la factura antes de aceptar la entrega y contacte Omcan dentro de las 24 horas, de modo que podamos iniciar una reclamación con la compañía. Un informe detallado sobre los daños causados a la máquina debe ser llenado en el plazo de tres días, desde la fecha de entrega que se muestra en los documentos de envío. Omcan no tiene ningun recurso por productos dañados que se enviaron a recoger por terceros.

Antes de utilizar cualquier equipo, siempre lea y familiarizarse con todas las instrucciones de funcionamiento y seguridad.

Omcan le gustaría darle las gracias por la compra de esta máquina. Es de la mayor importancia para salvar estas instrucciones para futuras consultas. Además, guarda la caja original y el embalaje para el envío del equipo si servicio técnico o devolución de la máquina que se requiere.

Safety and Warranty

ELECTRICAL REQUIREMENT

- Make sure there is a suitable power outlet with proper grounding to power the wine cellar.
- Avoid the use of three plug adapters or cutting off the third grounding in order to accommodate a two plug outlet. This is a dangerous practice since it provides no effective grounding for the wine cellar and may result in shock hazard.

Safety and Warranty

INSTALL LIMITATIONS

- Do not install your wine cellar in any location not properly insulated or heated e.g. garage etc.
- Select a suitable location for the wine cellar on a hard even surface away from direct sunlight or heat source e.g. radiators, baseboard heaters, cooking appliances etc. Any floor unevenness should be corrected with the leveling legs located on the front and rear bottom corners of wine cellar.

USE OF EXTENSION CORDS

- Avoid the use of an extension cord because of potential safety hazards under certain conditions. If it is necessary to use an extension cord, use only a 3-wire extension cord that has a 3-blade grounding plug and a 3-slot outlet that will accept the plug. The marked rating of the extension cord must be equal to or greater than the electrical rating of the appliance.

IMPORTANT SAFETY INSTRUCTIONS

- Basic precautions when using.
- Only use your wine cabinet for intended purposes, as described in this guide.
- Never unplug the wine cabinet by pulling out the power cord, grip the plug firmly and pull straight out to remove from wall socket.
- Immediately repair or replace any worn or damaged cord, never use a cord that is split or which shows signs of wear along its length or on its ends.
- This appliance is not intended for use by persons (including children) with reduced physical, sensory or mental capabilities, or lack of experience and knowledge, unless they have been given supervision or instruction concerning use of the appliance by a person responsible for their safety.
- Children should be supervised to ensure that they do not play with the appliance. Do not allow children to climb on, sit on or stand on the wine cabinet, nor hang from its shelves. They could damage the cabinet.
- Do not use an extension cord. Do not operate this device if its power cable or plug is damaged, or it does not work properly, or it is damaged, or hasn't work properly, or it is damaged, or has been dropped. If the power cable is damaged, it will need to be replaced by the manufacturer or his service agency or a similar qualified person, to avoid any dangers.
- Do not place other appliance inside the cabinet.

WARNING

- Refrigerant and foam layer is flammable, pay attention to the fire when maintenance, installation, transportation and handling. Used product need to be recycled by specialized companies, do not arbitrarily discarded.
- It is prohibited to place the machine in a place where is possible to leak corrosive and flammable gas, it is easy to explode or damage the machine.
- The grounding wires cannot be connected with the gas pipe, the water pipe system, the lightning rod and the telephone. If ignore this, it will has the possibility to cause the receiving an electric shock accident.
- Cannot lengthen the power cord without authorization, meanwhile, this appliance couldn't share a socket with other appliance, otherwise, it is easy to cause short circuit or
- This product does not contain any spare parts, please do not disassemble. The refrigerant used in this

Safety and Warranty

product is combustible, non-professional maintenance personnel shall not repair the machine, improper repair may be the risk of fire or explosion. If the machine is faulty, please contact the service personnel.

- This appliance is not intended for use by persons (including children) with reduced physical, sensory or mental capabilities, or lack of experience and knowledge, unless they have been given supervision or instruction concerning use of the appliance by a person responsible for their safety.
- Children should be supervised to ensure that they do not play with the appliance.
- If the supply cord is damaged, it must be replaced by the manufacturer, its service agent or similarly qualified person in order to avoid a hazard.
- **WARNING:** keep ventilation openings, in the appliance enclosure or in the built-in structure, clear of obstruction.
- **WARNING:** do not use mechanical devices or other means to accelerate the defrosting process, other than those recommended by the manufacturer.
- **WARNING:** do not damage the refrigerant circuit.
- **WARNING:** do not use electrical appliances inside the food storage compartments of the appliance, unless they are of the type recommended by the manufacturer.
- **WARNING:** when positioning the appliance, ensure the supply cord is not trapped or damaged.
- **WARNING:** do not locate multiple portable socket-outlets or portable power supplies at the rear of the appliance.
- Do not store explosive substances such as aerosol cans with a flammable propellant in this appliance.
- The plug must be accessible after the product installed.
- **DANGER:** risk of child entrapment. Before you throw away your old refrigerator or freezer:
 - Take off the doors.
 - Leave the shelves in place so that children may not easily climb inside.
- This appliance is intended to be used in household and similar applications such as:
 - Staff kitchen areas in shops, offices and other working environments.
 - Farm houses and by clients in hotels, motels and other residential type environments.
 - Bed and breakfast type environments.
 - Catering and similar non-retail applications.
- When the machine is installed, the left and right sides and back must have more than 5cm of the heat dissipation space, the machine cannot store flammable items.
- During handling, be careful, do not carry from the front and rear of the box, should be tilted from the left and right sides, cannot lie down to move the box.

SUITABLE FOR HIGH TRAFFIC AREAS WHERE NOISE LEVELS ARE NOT A CONCERN.

OMCAN IS NOT RESPONSIBLE FOR DIMINISHED COOLING OR ANY DAMAGES DUE TO WATER LEAKS. WARRANTY FOR WATER LEAKS IS VOID IF THE AMBIENT ROOM TEMPERATURE EXCEEDS 75°F AND 55% RELATIVE HUMIDITY, AND THE APPLIANCE DRAIN IS NOT CONNECTED DIRECTLY TO THE FLOOR DRAIN.

RESIDENTIAL USERS: vendor assumes no liability for parts or labor coverage for component failure or other damages resulting from installation in non-commercial or residential applications. The right is reserved to deny shipment for residential usage; if this occurs, you will be notified as soon as possible.

1 YEAR PARTS AND LABOUR WARRANTY

Safety and Warranty

Within the warranty period, contact Omcan Inc. at 1-800-465-0234 to schedule an Omcan authorized service technician to repair the equipment locally.

Unauthorized maintenance will void the warranty. Warranty covers electrical and part failures, not improper use.

Please see <https://omcan.com/disclaimer> for complete info.

WARNING:

The packaging components (cardboard, polyethylene, and others) are classified as normal solid urban waste and can therefore be disposed of without difficulty.

In any case, for suitable recycling, we suggest disposing of the products separately (differentiated waste) according to the current norms.

DO NOT DISCARD ANY PACKAGING MATERIALS IN THE ENVIRONMENT!

Technical Specifications

Model	WC-CN-0126-DB	WC-CN-0126-D
Item Number	48525	48526
Volume	291 L / 10.27 cu.ft.	
Temperature Zone	Dual	
Number of Shelves	13	
Shelf Material	Beech Wood	
Refrigerant	R600a	
Type of Cooling	Compressor with Fan Cooling	
Temperature Range	5 - 20°C / 41 - 68°F	
Max Ambient Temp Rating	24°C / 75°F	
Climate	ST	
Defrosting Function	Yes	
Body Color	Black	Silver
Electrical	110-120V / 60Hz / 1	
Net Dimensions (DWH)	24.5" x 23.4" x 62.7" / 623 x 595 x 1592mm	
Packaging Dimensions	27" x 25.8" x 65.2" / 685 x 655 x 1655mm	
Net Weight	174.2 lbs. / 79 kgs.	
Packaging Weight	185.2 lbs. / 84 kgs.	

Installation

WINE CABINET INSTALLATION

- When you receive the cabinet, please unpack the unit and make sure there is no flaws in its external appearance (from shocks, deformation, etc.)
- Open the door and check all interior fittings and supplied items if are all complete (shelves, instruction, control panel, etc.) Please install it according to the following points if the shelves or shelf brackets fall off during transit.
- After checking, if no problem, then, please carry to the final place, which should be care as follows:
 - Leaving space of minimum 5cm between your wine cabinet and left & right wall.
 - At least 8cm between back of cabinet and the wall.
- Position the wine cabinet on a firm and flat level surface, if not, adjust the feet of wine cabinet to keep level. If the floor is carpeted or some type of solid wood floor, it is recommended to place the device on a

Installation

thin pad to prevent the heat emitted by the device's cooler from discoloring the carpet or floor, and uneven installation can cause vibration, noise or door tilting.

- Away from sources of heat and high humidity areas (laundry room and bathroom, etc).
- Do not tilt it at an angle of more than 45° when move the cabinet. Allow a minimum 10 minutes interval between transit and re-starting.
- Make sure the ventilation is free if you wish to install your cabinet into a worktable, otherwise, it will reduce the effect of usage.

Operation

WINE CELLAR FEATURES AND USE INITIAL SETUP

- Before connecting the wine cellar to the power source, let it stand upright for approximately 24 hours. This will reduce the possibility of a malfunction in the cooling system from handling during transportation.
- Once you have plugged the unit into an electrical outlet, let the unit run for at least 4 hours to acclimate before making any adjustments.

SHELVING

- Remove packing materials from shelves once unit is stable and ready for storage.
- Disperse the bottles evenly to avoid concentrating weight in one place. Bottles must not touch either the back of the cabinet or the step at the bottom.
- Make sure that the bottles are not all grouped together either at the top or bottom of the cabinet.
- Only pull out one rolling shelf at a time. Never attempt to pull more than one.
- The wine cellar will hold 'standard' Bordeaux sized bottles, if up to half of your collection consists of nonstandard Bordeaux-size bottles, your maximum capacity may be reduced by 20-25%. If your collection consists mostly of these larger sized bottles, your maximum capacity may be reduced by as much as 40%.

OPERATING YOUR WINE CELLAR

REMOVING THE SHELF

Once wood shelf need to change, please check which kind of slider.

To remove a rolling shelf:



(A)



(B)

1. Remove all bottles.

2. Pull the shelf out as far as it will go.
3. If design A, lift the shelf up and off the slides. Please make sure the wood hole need to match with slider hook when you assemble the shelf.
If design B:
 - a) unscrew the wood shelf from slider.
 - b) take out the old wood shelf and change new one.
 - c) Screw the wood shelf again from shelf bottom as previous.

INSTALLING YOUR HANDLE (IF APPLICABLE)

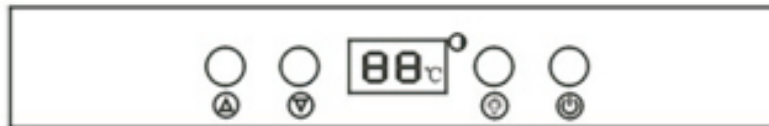
1. Pull back the door seal behind handle location.
2. Insert screws into pre-drilled screw holes.
3. Attach gasket.
4. Attach handle.
5. Tighten screws and press door seal back into place.

OPERATING YOUR WINE CELLAR

Each wine cellar includes an operating panel on the front of the unit. This operating panel includes several features to operate and control the temperature.

TEMPERATURE SETTING

THE TEMPERATURE SETTING OF WINE CABINET



CONTROL PANEL FOR A SINGLE ZONE (BUTTONS ARE THE SAME FOR DUAL ZONES)

- ⏻ ON/OFF of the whole system
- 💡 ON/OFF of inside cabinet LED light
- ⬆️ Temperature Up setting
- ⬇️ Temperature Down setting

Pushing the temperature key up and down for 5 seconds, then, temperature display will be exchange between °C and °F. Temperature setting range of cabinet is 5 °C~20°C (41°F~68°F) . Customers can set the temperature according to their actual demands.

LOADING AND STORAGE OF WINE BOTTLE

BOTTLE LOADING METHOD

- Wooden shelf capacity: 3,4,5,9 or 11 bottles / shelf.
- Bottom shelf capacity: 3,5, 8 or 12 bottles / shelf.
- Maintain a minimum 20mm between bottle and back plate.
- Ensure storage bottle bottom Dia.78mm & Height 300mm, otherwise, less bottle loading.

Operation

Ensure bottle and shelf safety, check the following tips:

- Spread your bottles out as evenly as possible over the shelves, so weight is not concentrated in one point, and make sure your bottles will not touch the back of the cabinet.
- Make sure bottles are not all grouped together at the top or bottom of the cabinet.
- Following loading instructions provided, according to the type of storage fixtures with which your cabinet is equipped, and never stack bottles on a sliding shelf.
- Humidity percentage inside cabinet: 50%-80%.

Maintenance

In order to ensure best performance & long-last reliable working item, please follow the simple maintenance and cleaning operations as below:

- Make sure the power cord is unplugged before cleaning the back of your cabinet, or before moving it.
- Clean the inside of your cabinet thoroughly once a year, after unplugging and unloading it (uses water and a mild cleaning item, then rinse carefully).
- To assure that your wine cabinet provides long-lasting reliable performance, you should check it regularly and inform your dealer if anything unusual is found.

Troubleshooting

Problem	Possible Causes
Appliance not working.	Is the power cord plugged in?
Cooling problem.	Broken fuse?
	No power?
	No good ventilation?
	Heat source close to appliance?
	Door does not close properly or stays open too long?
	Door gasket is not tight or deformed?
	Too many bottles on the same shelf?
	Air inlet or outlet is blocked?
	Wrong settings?
	Not enough space for ventilation on both of the sides and back?

Troubleshooting

Noise.	Appliance is not placed on a flat surface?
	Appliance touches a wall?
	Loose or missing parts?
If the fault cannot be fixed through inspection, please contact Omcan.	

Note: normal operation for following phenomenon:

COMPRESSOR NOT START:

Compressor will not start if room temperature is lower than desired temperature, but item is still working with heater inside till desired temperature achieved.

COMPRESSOR RE-START:

Compressor will stop working when cooling system in the cabinet reaches presetting temperature, and re-start working until the desired temperature is achieved. Allow a minimum 5 minute interval before re-starting.

DEW ON THE SURFACE OF CABINET:

The surface of wine cabinet especially the glass door appears some frost if item in a damp room. This is due to the moisture in the air coming into contact with the cabinet. Please wipe it away with dry cloth.

NORMAL OPERATING SOUNDS YOU MAY HEAR:

- Boiling water, gurgling sounds or slight vibrations that are the result of the refrigerant circulating through the cooling coils.
- Popping or cracking noises due to the auto defrost cycle melting frost build-up.
- Liquid sound:
 - The sound of compressor when starts or stops working.
 - The flowing sound of refrigerant in the refrigeration system.
 - The evaporating sound of refrigerant in the evaporator.

CONDENSATION FORMED INSIDE THE CABINET:

Under the environment with high level of humidity or the door of wine cabinet has been left open for a long period or opened frequently, there are much condensation, and please wipe off the water from the door and walls and leave the door closed as long as possible.

HEAT FUNCTION ON BOTTOM ZONE:

Heat function on bottom zone will automatically be on as below reason.

1. When setting temp. is upper than room temp.
2. When inside bottom temperature is lower than setting temp.

INDICATOR LIGHT:

When temperature inside cabinet is out of range of setting temperature, both up and down indicator light will be on. Once temperature reaches setting temperature, then, this light will be off automatically.

Troubleshooting

ERROR CODE:

E9 - The signal cable is loose, it needs to re-connect the signal cable.

E2.1/H2 - Problem with temperature sensor failure.

E2 - The main problem is refrigeration failure.

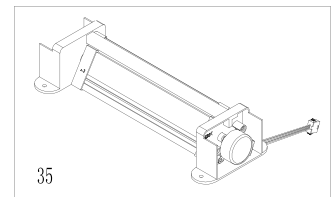
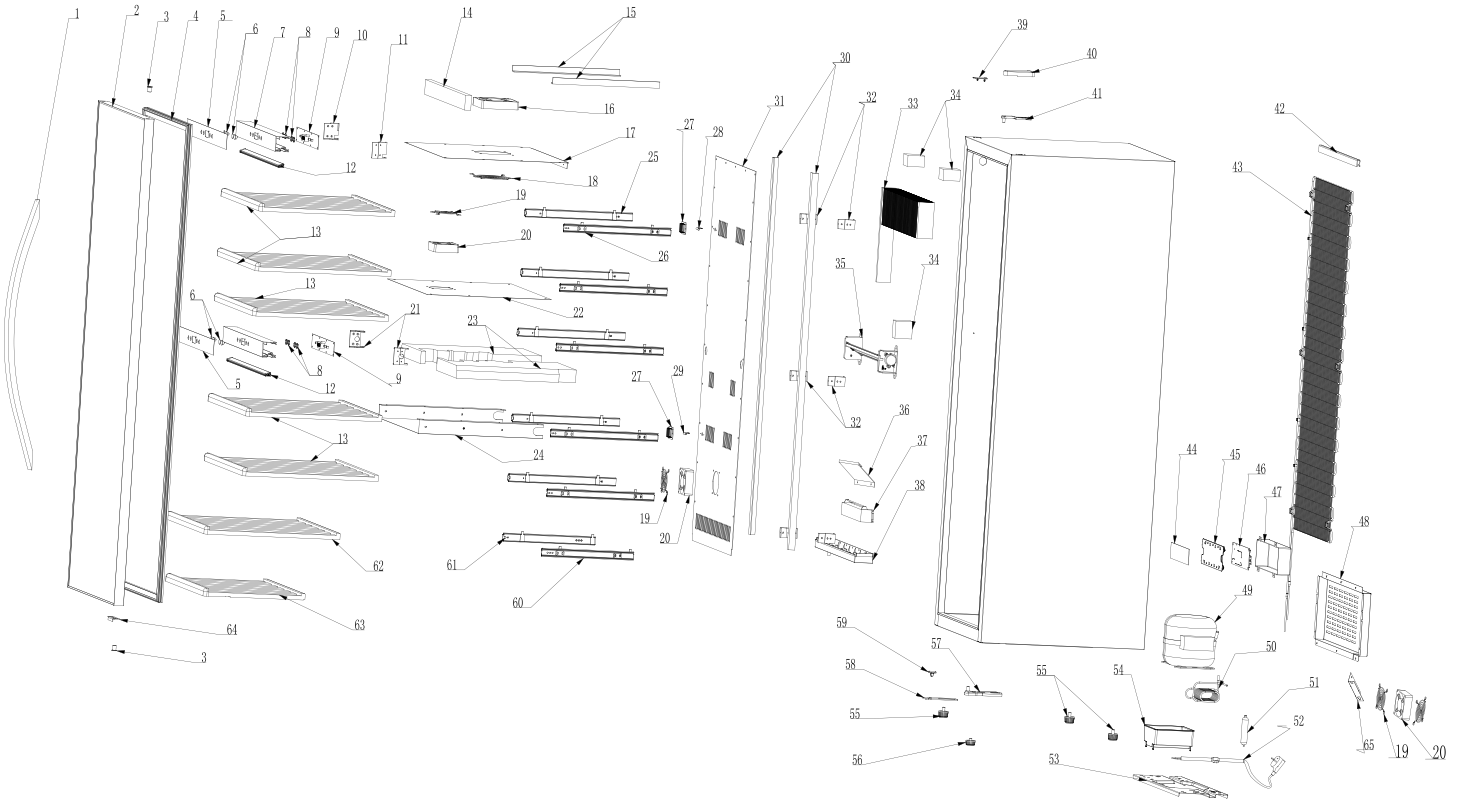
H1 - Door alarm, when the door open for 60 seconds, the alarm will sound and the panel will display H1.

H3 - The actual temperature inside casing is too high or too low.

Parts Breakdown

Model WC-CN-0126-DB 48525

Model WC-CN-0126-D 48526



Parts Breakdown

Model WC-CN-0126-DB 48525

Item No.	Description	Position	Item No.	Description	Position	Item No.	Description	Position
AS780	Handle Stainless Steel for 48525	1	79755	Bottom Cover (Mid.Board) for 48525	24	AS804	Electric Board Cover for 48525	47
AS781	Door Assembly Full Glass for 48525	2	AS793	Sliding Trace Left-14" for 48525	25	AS805	Compressor Room Cover for 48525	48
79712	Shaft Sleeve for 48525	3	AS794	Sliding Trace Right-14" for 48525	26	AS806	Compressor for 48525	49
AS782	Door Gasket for 48525	4	79700	Sensor Cap for 48525	27	68735	Exhaust Pipe for 48525	50
AS783	Control Panel Sticker-Black for 48525	5	79730	Up Sensor for 48525	28	68736	Dry Filter for 48525	51
AS784	Button for 48525	6	79749	Down Sensor for 48525	29	AS807	Power Supply Cord for 48525	52
AS785	Electric Box with LED Light Strip for 48525	7	68799	Condenser Strip for 48525	30	79695	Compressor Support Plate for 48525	53
AS786	Button Nut for 48525	8	AS795	Back Ventilation Board for 48525	31	79691	Water Tray for 48525	54
AS787	Display PCB Board for 48525	9	68738	Back Ventilation Board Holder for 48525	32	AS808	Front Foot-15mm for 48525	55
79676	Electric Box Support Left for 48525	10	AS796	Evaporator for 48525	33	79696	Front Foot for 48525	56
68729	Right Support Frame of Upper Electric Box for 48525	11	AS797	Evaporator Sealing Block for 48525	34	79697	Down Hinger+Foot for 48525	57
AS788	LED Light Strip - New for 48525	12	AS798	Motor General Assembly for 48525	35	AS809	Lock Bracket with Plastic Cushion for 48525	58, 59
AS789	Upper Wood Shelf for 48525	13, 69	79683	PVC Sink for 48525	36	AS810	Sliding Trace Left-12" for 48525	60
79703	Sealing (Froming) for 48525	14	AS799	Heater for 48525	37	AS811	Sliding Trace Right-12" for 48525	61
79705	Fixed Plate for 48525	15	79711	Watershed Plate for 48525	38	AS812	Lower Shelf for 48525	62
AS790	Fan DC12025 for 48525	16	79685	Top Cover for 48525	39	AS813	Bottom Wood Shelf for 48525	63
79752	Top Ventilation Board for 48525	17	79687	Hinge Cover for 48525	40	AM686	Door Limit - Full Glass Door for 48525	64
68732	Fan Cover for 48525	18	79686	Upper Hinger for 48525	41	AS814	Carton Box for 48525	65
AS791	Small Fan Cover for 48525	19	68799	Condenser Strip for 48525	42	AS815	Manual for 48525	66
79701	8025 Fan for 48525	20	AS800	Condenser for 48525	43	AS816	Display Shelf Assembly for 48525	67
79708	Fixation Electrical Box (Down) for 48525	21	AS801	Velcro Tape for 48525	44	AS817	Foldable Shelf for 48525	68
79754	Up Cover (Mid.Board) for 48525	22	AS802	Electric Board Base for 48525	45	AS818	Upright Shelf for 48525	70
AS792	Middle Board Foam for 48525	23	AS803	Electric Board for 48525	46			

Parts Breakdown

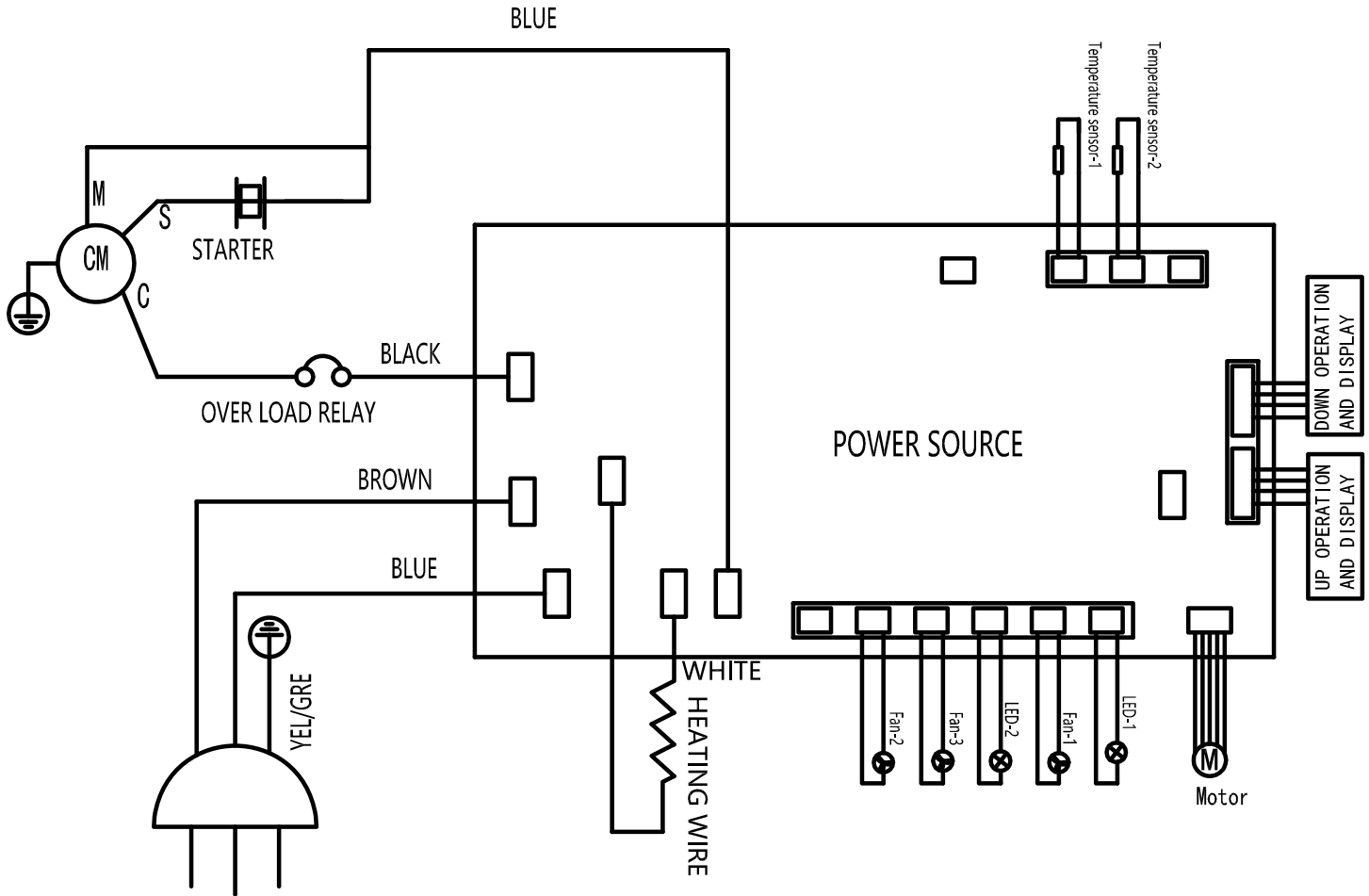
Model WC-CN-0126-D 48526

Item No.	Description	Position	Item No.	Description	Position	Item No.	Description	Position
AS780	Handle Stainless Steel for 48526	1	79755	Bottom Cover (Mid.Board) for 48526	24	AS804	Electric Board Cover for 48526	47
AS819	Door Assembly-Stainless Steel for 48526	2	AS793	Sliding Trace Left-14" for 48526	25	AS805	Compressor Room Cover for 48526	48
79712	Shaft Sleeve for 48526	3	AS794	Sliding Trace Right-14" for 48526	26	AS806	Compressor for 48526	49
AS782	Door Gasket for 48526	4	79700	Sensor Cap for 48526	27	68735	Exhaust Pipe for 48526	50
AS820	Control Panel Sticker-Silver for 48526	5	79730	Up Sensor for 48526	28	68736	Dry Filter for 48526	51
AS784	Button for 48526	6	79749	Down Sensor for 48526	29	AS807	Power Supply Cord for 48526	52
AS785	Electric Box with LED Light Strip for 48526	7	68799	Condenser Strip for 48526	30	79695	Compressor Support Plate for 48526	53
AS786	Button Nut for 48526	8	AS795	Back Ventilation Board for 48526	31	79691	Water Tray for 48526	54
AS787	Display PCB Board for 48526	9	68738	Back Ventilation Board Holder for 48526	32	AS808	Front Foot-15mm for 48526	55
79676	Electric Box Support Left for 48526	10	AS796	Evaporator for 48526	33	79696	Front Foot for 48526	56
68729	Right Support Frame of Upper Electric Box for 48526	11	AS797	Evaporator Sealing Block for 48526	34	79697	Down Hinger+Foot for 48526	57
AS788	LED Light Strip - New for 48526	12	AS798	Motor General Assembly for 48526	35	AS809	Lock Bracket with Plastic Cushion for 48526	58, 59
AS789	Upper Wood Shelf for 48526	13, 69	79683	PVC Sink for 48526	36	AS810	Sliding Trace Left-12" for 48526	60
79703	Sealing (Froming) for 48526	14	AS799	Heater for 48526	37	AS811	Sliding Trace Right-12" for 48526	61
79705	Fixed Plate for 48526	15	79711	Watershed Plate for 48526	38	AS812	Lower Shelf for 48526	62
AS790	Fan DC12025 for 48526	16	79685	Top Cover for 48526	39	AS813	Bottom Wood Shelf for 48526	63
79752	Top Ventilation Board for 48526	17	79687	Hinge Cover for 48526	40	AM686	Door Limit - Full Glass Door for 48526	64
68732	Fan Cover for 48526	18	79686	Upper Hinger for 48526	41	AS814	Carton Box for 48526	65
AS791	Small Fan Cover for 48526	19	68799	Condenser Strip for 48526	42	AS815	Manual for 48526	66
79701	8025 Fan for 48526	20	AS800	Condenser for 48526	43	AS816	Display Shelf Assembly for 48526	67
79708	Fixation Electrical Box (Down) for 48526	21	AS801	Velcro Tape for 48526	44	AS817	Foldable Shelf for 48526	68
79754	Up Cover (Mid.Board) for 48526	22	AS802	Electric Board Base for 48526	45	AS818	Upright Shelf for 48526	70
AS792	Middle Board Foam for 48526	23	AS803	Electric Board for 48526	46			

Electrical Schematics

Model WC-CN-0126-DB 48525

Model WC-CN-0126-D 48526



NEMA
5 - 15P
125VAC / 15 AMP



Warranty Registration

Thank you for purchasing an Omcan product. To register your warranty for this product, complete the information below, tear off the card at the perforation and then send to the address specified below. You can also register online by visiting:

Merci d'avoir acheté un produit Omcan. Pour enregistrer votre garantie pour ce produit, complétez les informations ci-dessous, détachez la carte au niveau de la perforation, puis l'envoyer à l'adresse spécifiée ci-dessous. Vous pouvez également vous inscrire en ligne en visitant:

Gracias por comprar un producto Omcan usted. Para registrar su garantía para este producto, complete la información a continuación, cortar la tarjeta en la perforación y luego enviarlo a la dirección indicada a continuación. También puede registrarse en línea en:

<https://omcan.com/warranty-registration/>

For mailing in Canada

Pour postale au Canada

Por correo en Canadá

For mailing in the US

Pour diffusion aux États-Unis

Por correo en los EE.UU.

OMCAN

PRODUCT WARRANTY REGISTRATION

3115 Pepper Mill Court,
Mississauga, Ontario
Canada, L5L 4X5

OMCAN

PRODUCT WARRANTY REGISTRATION

4450 Witmer Industrial Estates, Unit 4,
Niagara Falls, New York
USA, 14305

or email to: service@omcan.com



Purchaser's Information

Name: _____

Address: _____

City: _____ Province or State: _____ Postal or Zip: _____

Country: _____

Dealer from which Purchased: _____

Dealer City: _____ Dealer Province or State: _____

Invoice: _____

Model Name: _____ Model Number: _____

Machine Description: _____

Date of Purchase (MM/DD/YYYY): _____

Would you like to extend the warranty? Yes No

Company Name: _____

Telephone: _____

Email Address: _____

Type of Company:

Restaurant Bakery Deli

Butcher Supermarket Caterer

Institution (specify): _____

Other (specify): _____

Serial Number: _____

Date of Installation (MM/DD/YYYY): _____

Thank you for choosing Omcan | Merci d'avoir choisi Omcan | Gracias por elegir Omcan



Since 1951 Omcan has grown to become a leading distributor of equipment and supplies to the North American food service industry. Our success over these many years can be attributed to our commitment to strengthen and develop new and existing relationships with our valued customers and manufacturers. Today with partners in North America, Europe, Asia and South America, we continually work to improve and grow the company. We strive to offer customers exceptional value through our qualified local sales and service representatives who provide convenient access to over 6,500 globally sourced products.

Depuis 1951 Omcan a grandi pour devenir un des "leaders" de la distribution des équipements et matériel pour l'industrie des services alimentaires en Amérique du Nord. Notre succès au cours de ces nombreuses années peut être attribué à notre engagement à renforcer et à développer de nouvelles et existantes relations avec nos clients et les fabricants de valeur. Aujourd'hui avec des partenaires en Amérique du Nord, Europe, Asie et Amérique du Sud, nous travaillons continuellement à améliorer et développer l'entreprise. Nous nous efforçons d'offrir à nos clients une valeur exceptionnelle grâce à nos ventes locales qualifiées et des représentants de service qui offrent un accès facile à plus de 6500 produits provenant du monde entier.

Desde 1951 Omcan ha crecido hasta convertirse en un líder en la distribución de equipos y suministros de alimentos en América del Norte industria de servicios. Nuestro éxito en estos años se puede atribuir a nuestro compromiso de fortalecer y desarrollar nuevas relaciones existentes con nuestros valiosos clientes y fabricantes. Hoy con socios de América del Norte, Europa, Asia y América del Sur, que trabajan continuamente para mejorar y crecer la empresa. Nos esforzamos por ofrecer a nuestros clientes valor excepcional a través de nuestro local de ventas y representantes de los servicios que proporcionan un fácil acceso a más de 6,500 productos con origen a nivel mundial.

